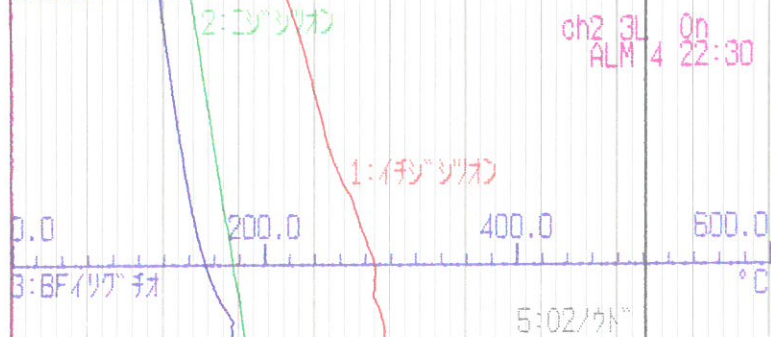
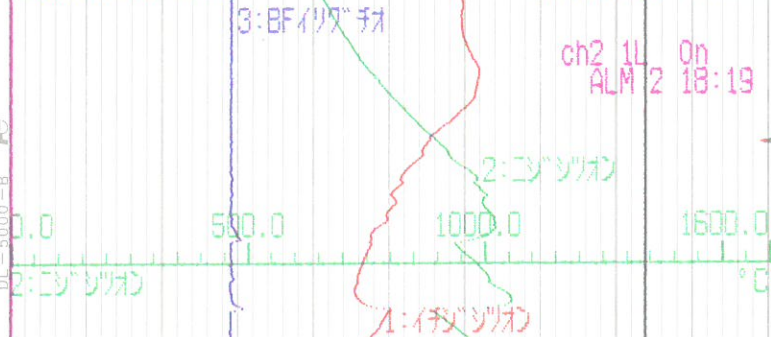


1: 577.8 °C
 3: 116.4 °C
 5: 20.9 %O₂
 2: BFイリクチャ
 4: 375.6 °C
 6: -1.2 ppm
 20mm/h
 17 08/07 23:00



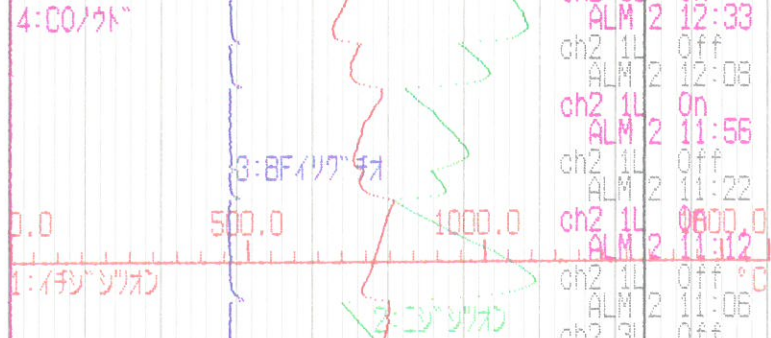
ch2 3L On
 ALM 4 22:30

1: 648.4 °C
 3: 174.1 °C
 5: 20.9 %O₂
 2: COノウト
 4: 653.1 °C
 6: -1.3 ppm
 20mm/h
 17 08/07 19:00



ch2 1L On
 ALM 2 18:19

1: 718.1 °C
 3: 173.9 °C
 5: 20.9 %O₂
 2: COノウト
 4: 1045.7 °C
 6: -0.7 ppm
 20mm/h
 17 08/07 15:00



ch2 2H Off
 ALM 3 13:07
 ch2 2H On
 ALM 3 13:02
 ch2 1L Off
 ALM 2 12:56
 ch2 1L On
 ALM 2 12:33
 ch2 1L Off
 ALM 2 12:08
 ch2 1L On
 ALM 2 11:56
 ch2 1L Off
 ALM 2 11:22
 ch2 1L On
 ALM 2 11:12
 ch2 1L Off °C
 ALM 2 11:06
 ch2 3L Off
 ALM 4 11:04
 ch2 3L On
 ALM 4 11:04
 ch2 1L On
 ALM 2 10:56
 ch2 1L Off
 ALM 2 10:54
 ch2 3L Off
 ALM 4 10:54

1: 346.8 °C
 3: 176.6 °C
 5: 20.9 %O₂
 2: COノウト
 4: 338.4 °C
 6: -1.1 ppm
 20mm/h
 17 08/07 11:00