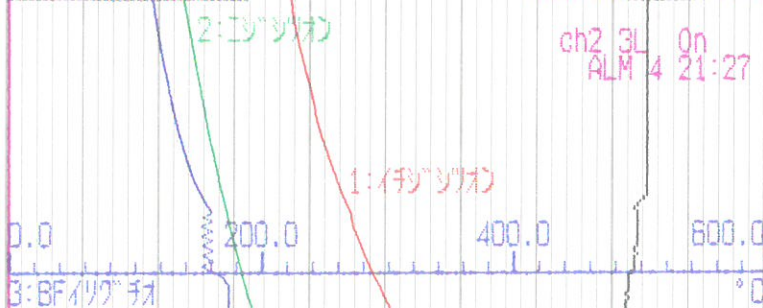


1: 595.1 °C  
 3: 113.4 °C  
 5: 21.0 %O<sub>2</sub>  
 20mm/h  
 19/09/10 22:00

2: 369.1 °C  
 4: -2.0 ppm  
 6: -

9

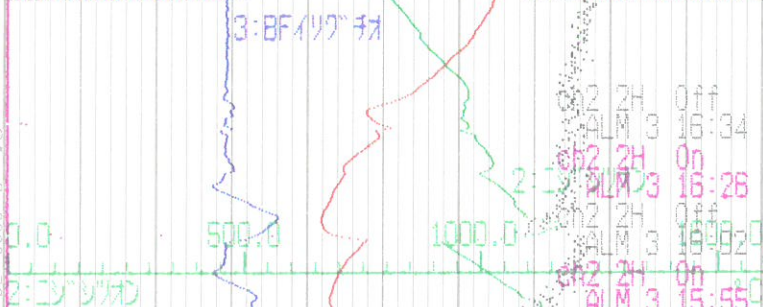


ch2 3L On  
 ALM 4 21:27

4: 1033.2 °C  
 5: 173.5 °C  
 5: 19.0 %O<sub>2</sub>  
 20mm/h  
 19/09/10 18:00

2: 809.3 °C  
 4: -1.8 ppm  
 6: -

10



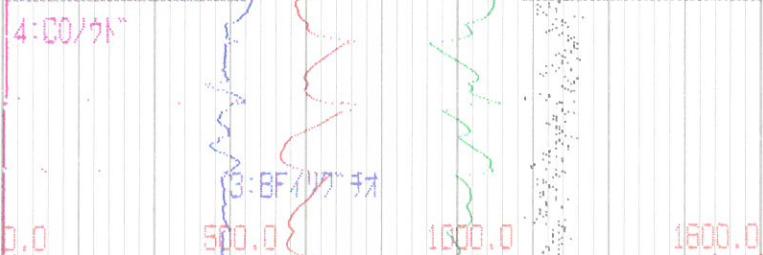
ch2 1L On  
 ALM 2 18:01

ch2 2H Off  
 ALM 3 16:34  
 ch2 2H On  
 ALM 3 16:26  
 ch2 2H Off  
 ALM 3 16:02  
 ch2 2H On  
 ALM 3 15:55

1: 609.4 °C  
 3: 194.1 °C  
 5: 18.2 %O<sub>2</sub>  
 20mm/h  
 19/09/10 14:00

2: 1080.0 °C  
 4: -1.6 ppm  
 6: -

5: 02/ワット



ch2 1L Off  
 ALM 2 10:34  
 ch2 1L On  
 ALM 2 10:33  
 ch2 1L Off  
 ALM 2 10:27  
 ch2 1L On  
 ALM 2 10:25  
 ch2 1L Off  
 ALM 2 10:20  
 ch2 3L Off  
 ALM 4 10:00

1: 346.0 °C  
 3: 175.2 °C  
 5: 15.6 %O<sub>2</sub>  
 20mm/h  
 19/09/10 10:00

2: 387.0 °C  
 4: 345.6 ppm  
 6: -